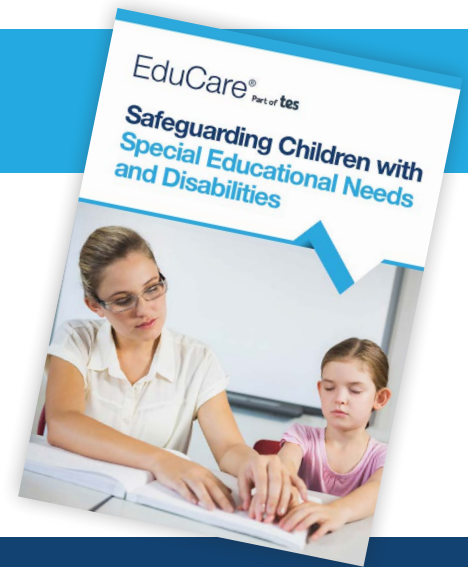


Safeguarding Children with Special Educational Needs and Disabilities

There are increasing numbers of children and young people with special educational needs attending mainstream education settings and this course will give you an understanding of how to safeguard them. It covers the legislation for the four nations of the United Kingdom and highlights the main vulnerability factors that mean these children are at the highest risk of abuse. Finally, it covers good practice and there are case reviews and two scenarios to work through.



Course details

- One module with a multiple-choice questionnaire
- One CPD credit*
- Optional narration of the course module and questionnaire for accessibility
- Personalised downloadable certificate
- 70% pass mark
- Printable module for future reference

*1 CPD credit equals up to 1 hour of learning

Course content

- The law and legislation
 - Significant education and SEND legislation for the four nations of the United Kingdom
- Increased vulnerabilities
 - Specific vulnerability factors for children with SEND
 - Peer-on-peer abuse
- Good practice
 - Recognising indicators of abuse
 - Dealing with disclosures of abuse
 - Policy and procedures
 - Information sharing
 - Responsibilities
 - Appropriate physical contact by school staff
- Serious case reviews
- Scenarios



This course is suitable for

Anyone who comes into contact or works directly with children and young people up to the age of 18 in a school setting.

The law and legislation 1

Key legislation and guidance (UK)




The Children and Families Act (2014) relates specifically to the safeguarding of disabled children. Part 3 establishes help for children with special educational needs and disabilities.



Peer-on-peer abuse 2

The abuse can take many forms including:

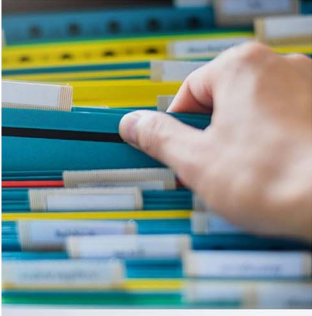
Isla is 12 years old and has cerebral palsy.



- Bullying, including cyberbullying

Isla is often bullied at school and online about the way she looks and the support she has to have.

Policy and Procedures 3



Guidance should include:

- ✓ how staff will respond to concerns regarding a child or young person
- ✓ how concerns regarding safeguarding will be reported
- ✓ what risks children and young people might face at home and within the school
- ✓ how staff and volunteers will be recruited to ensure that children and young people are safeguarded from potential harm
- ✓ how all staff and volunteers will be supported to recognise the signs of abuse and harm.



Key features

- Visually engaging and highly interactive.
- Answer explanations for those who achieve the pass mark.
- Scenarios and activities to embed learning.
- Resources to aid additional learning.



Why choose us?



“ I’m grateful for the work EduCare do. It was the backbone of my CPD when I was a supply teacher for a few years and it is still my first port of call when I need information ”

Peter Caughey
Heston Community School

www.educare.co.uk
01926 436 211
online@educare.co.uk

